

**“ECOSYSTEM RESTORATION PROJECT
PRE-OPERATIONS ASSESSMENT BY
INDIGENOUS PEOPLES
CULTURAL EXPERTS”**

**SHUSWAP INDIAN BAND
INVERMERE, BC**

(2021)



THE SHUSWAP BAND



We have strived to develop and to build upon, in the relationship between the Shuswap band and Wildlands Eco-Forestry, a trained workforce utilizing crewmembers with a wide range of skills relevant to multi-resource value considerations. Working with the Shuswap Band has provided the opportunity to utilize band members on the crew with local First Nations cultural expertise. Local First Nations further contribute additional local knowledge and skills, adopting this into our projects at the planning and operational levels.

As far as “pre-operations assessment by cultural experts”, utilizing band resources for archaeological assessments, locally trained cultural monitors on the staff and actively a part of daily mitigation operations is of great benefit. The opportunity to identify and mitigate potential conflicts and protect First Nations interests is vastly improved with direct First Nations involvement. Wildlands in partnership with the Shuswap Band, have been fortunate to be able to promote and provide training and employment for local forest workers and band members offering cross training and job diversity.

The partnership between the Shuswap Indian Band and Wildlands Eco Forestry (WEF) is a long standing and a unique one that has been over 13 years in the making. The Shuswap Band stays involved with local forest management activities and initiatives and we work closely with the provincial Government, FNESS, UBCM, CBT and other major funders. Wildlands Eco Forestry can be found in many aspects of our projects from start to finish. Before even being approved for a project, Shuswap and WEF are aware of any culturally sensitive or archaeological values in the surrounding project area. The band uses a program called CKK which maps out many of these values throughout our Traditional Territory. Through our boots on the ground approach led by WEF, our members (who are employed by WEF) start walking the prescriptions looking for any culturally modified trees, species at risk habitats etc. After that we customize our fuel treatments to align with the Secwepemc people’s values of being caretakers of the land.

Check out our FireSmart Canada Feature on you tube at:

<https://www.youtube.com/watch?v=J2PQjnd2CRM>

**Sierra Stump,
Lands Manager
Shuswap Band**



I have been working for the Shuswap Band for 15 years in a variety of capacities and positions and currently serve as the Shuswap Band Lands Manager.

A proud mother to a son who is Shuswap, Okanagan, and Ktunaxa ancestry – I am proud to be able to support the capacity building within the Secwépemcúlecw.

I carry with me over a decade of hands-on experience in First Nation lands management working on the development of laws, coordinating referrals, consultation and negotiations, completing surveys, and sitting on the Board of Directors for BCALM, and continuing to build upon my land management knowledge and experience through continued education.

I have been overseeing the resource management decision making, funding sourcing and mitigation efforts for the Band for several years and continue to head this program within the Shuswap Band lands.

**Brad Munroe,
Owner,
Wildlands Eco-Forestry Inc.**



I've been in the forest industry for ~28 years in various capacities. Initially spending the nineties working for local Consultants doing planning, development and layout in the East Kootenay's, I spent five years in the early 2000's in Prince George during the MPB epidemic, managing a forest products company and as an independent small scale salvage logger.

The past 17 years I've focused my attention and business to forest fuel management, ER & habitat enhancement work in southeastern British Columbia and southwestern Alberta.

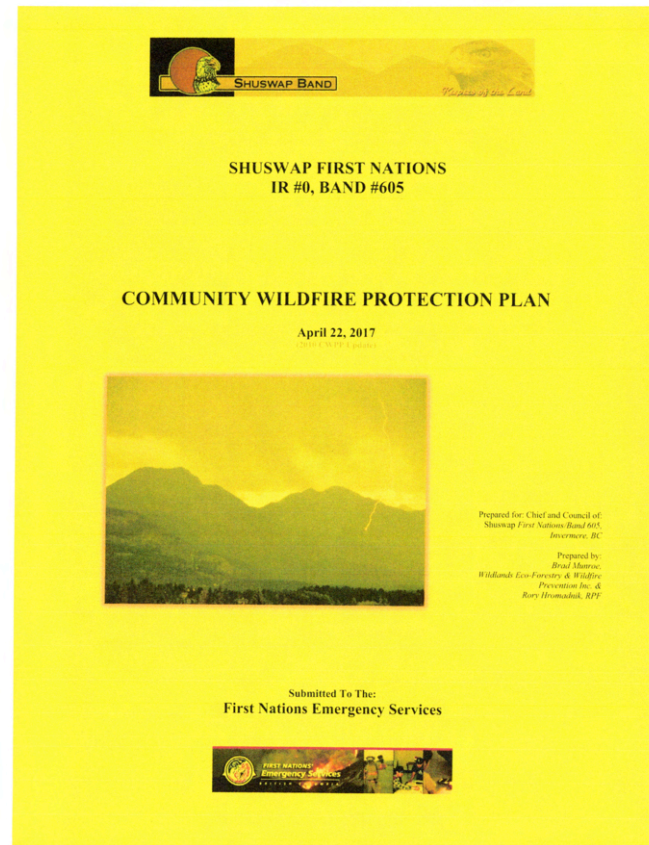
As part of the company's forward direction, we work closely with the Shuswap Band, offering employment and training and assisting in addressing First Nations interests and involvement in local forest management decisions and activities.

Community Wildfire Protection Planning

Over the past 13 years the Shuswap Band has worked diligently to produce a long term strategy for addressing the threat of wildfire locally through various forest fuel management programs including a comprehensive Community Wildfire Protection Plan in 2010, updated in 2018.

Ongoing planning and mitigation multi-year strategies encompassing several hundred hectares of forest land outlined in the CWPP currently involve Band members active in all aspects of the program.

This program has steadily evolved to integrate not only forest fuel management and community safety, but to encompass ecosystem restoration/habitat enhancement objectives reflecting the mutually inclusive objectives and strategies of a sound multi-resource management program.



RECOVERY OF SPECIES AT RISK ON THE SIB RESERVE



February 28th,
2019

(2016 – 2019) Final Report

Shuswap Reserve Species at Risk Surveys

The Shuswap band has been conducting Species at Risk surveying and management plans for several years within the Reserve lands focusing on the American badger and various targeted local species of concern as well as invasive plant identification and management

Wildlands Eco-Forestry has aided the Shuswap Band in the band's Species at Risk survey and management plans in the most recent phases of the multi-year program encompassing a 13-year period from 2008-2021. The program has involved various organizations and experts in their specific fields surveying the Band lands working along side Band members.

The most recent 3-year phase continued the surveying and treatment as well as the compilation of data from all phases of the program in preparation of continuing to habitat enhancement and species at risk protection.

This program continues to evolve and is pursued with great interest by the Shuswap band and several band members' involvement in each phase of the program.

Dry Gulch Forest Management Project

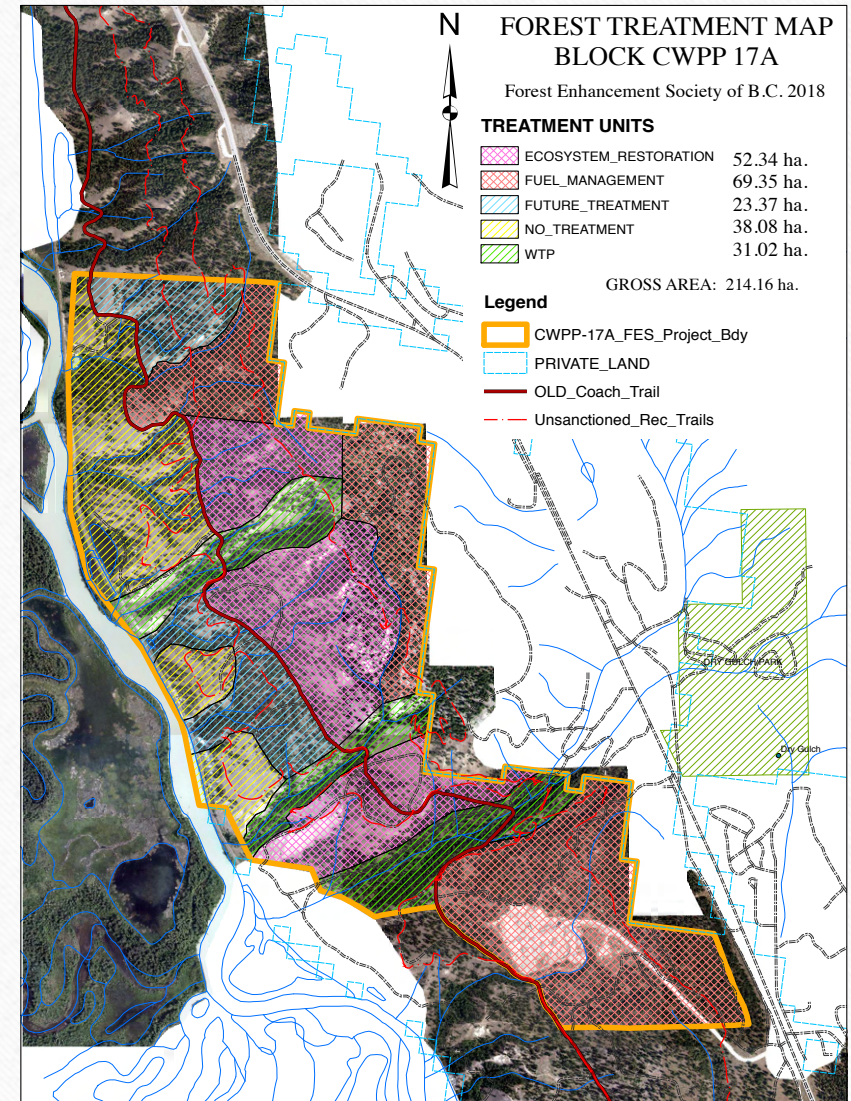
2018 - 2020

As part of the Shuswap band's ongoing local forest management activities, a 215 ha treatment unit was identified for treatment under the band's Community Wildfire Protection Plan. This project presented various management challenges as the proposed Forest Treatment Unit is within a provincial Wildlife Management Area with high recreational usage due to ease of access and local community proximity.

The Shuswap band, working closely with the Ministry of Forests, Lands, Natural Resource Operations and Rural Development developed a multi-resource focused management plan. This involved rehabilitation of former Christmas Tree permits, habitat restoration within an UWR unit, public recreation and trails, wildfire forest fuel management, and of course FN's interests/concerns.

An archaeological/cultural assessment was conducted and 'Chance Find' identification and procedures put into daily activities.

The Shuswap band's ongoing Invasive Weed management and Badger Habitat surveys adjacent to and within the Shuswap Reserve were also incorporated into the Dry Gulch Forest Management program and continue in various degrees with current and proposed projects.



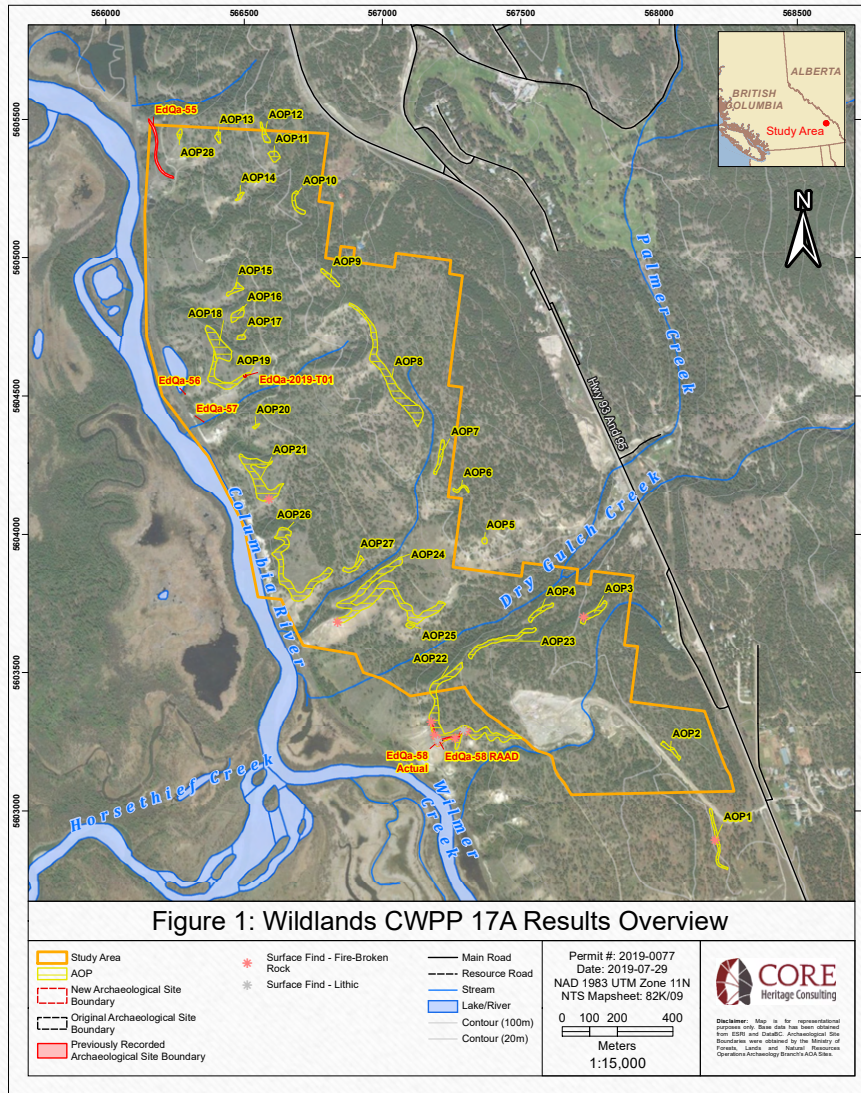
Shuswap Band Archaeological / Cultural/ Heritage & Referral Process

The Shuswap Indian Band's Reserve lands and the surrounding Traditional Territory have a rich history of use and occupancy by Secwepemc people over millennia. As these areas have been developed over the years, many important sites have been disturbed or destroyed. Our purpose is to ensure that further disruption of culturally sensitive sites within our land is avoided.

The Province is responsible for ensuring adequate consultation and where appropriate, accommodation to address potential impacts of proposed development on asserted aboriginal right and title. But **WE** are responsible to hold these agencies to standards set by us and also to protect these sites and values that can be different to each nation.

The Shuswap Band is heavily involved with every step in the process that starts when a referral is sent in. A desk-based review in cooperation with our Community Knowledge Keeper program is the first step. We then customize the next steps and that could include an AIA or AOA, which we provide and are held to higher than industry standards.

The Shuswap Band has developed an internal body to oversee this work. Wildlands works closely with the Shuswap Bands Archaeological group and continues with daily assessments conducted on the ground by Band members with local cultural/ archaeological expertise through direct project employment.



EACH PROJECT UNDERTAKEN INVOLVING WILDLANDS ECO-FORESTRY AND THE SHUSWAP BAND BUILDS UPON IDENTIFYING AND EXPANDING UPON MULTI RESOURCE VALUE MANAGEMENT



Habitat Piles



**Ground nests –
Vesper Sparrow**



**Perches, cavity
nesting wildlife
tree recruits from
“stubs” created
from past
Christmas tree
permit trees**



Shuswap Band Education & Training



- RISC - Resources Information Standards Committee (**Archaeological**)
- Culturally Modified Tree Inventory Training
- Cultural Monitor Certification
- Data Collection
- Swift Water Training
- First Aid – Levels I - III
- Electro Fishing Certificate
- Fisheries Technician
- S100 courses
- Traffic Management
- Basic Chainsaw use
- GPS data capture
- Forestry tools and instrument training and use





The Columbia Valley Transmission Line contributed to capacity building - the project offering substantial employment and training opportunities for band members in a wide variety of roles in resource management



An terrestrial/aquatic restoration program creating employment and training for Band Members and locally displaced forestry workers during the 2008-2009 economic downturn. Employment and training programs continue to evolve and contribute to the capacity building of the Shuswap Band



The Shuswap Band and Wildlands Eco-Forestry have combined resources complimentary to a wide variety of projects including the landscape construction of the latest **Wildlife Overpass** at the AB/BC border, **twinning of the Trans-Canada highway**, and the **Columbia Valley Transmission Line**

SIB Capacity building involves Band member opportunities in training and employment



Yoho Wildlife Overpass



Traffic Control, First Aid





LEAFY SPURGE

PROJECT PHOTOS



In this presentation, we've attempted to provide a snapshot of the process that the Shuswap Band and Wildlands Eco-Forestry have been following on various projects

We hope you have enjoyed this presentation

Thank you

